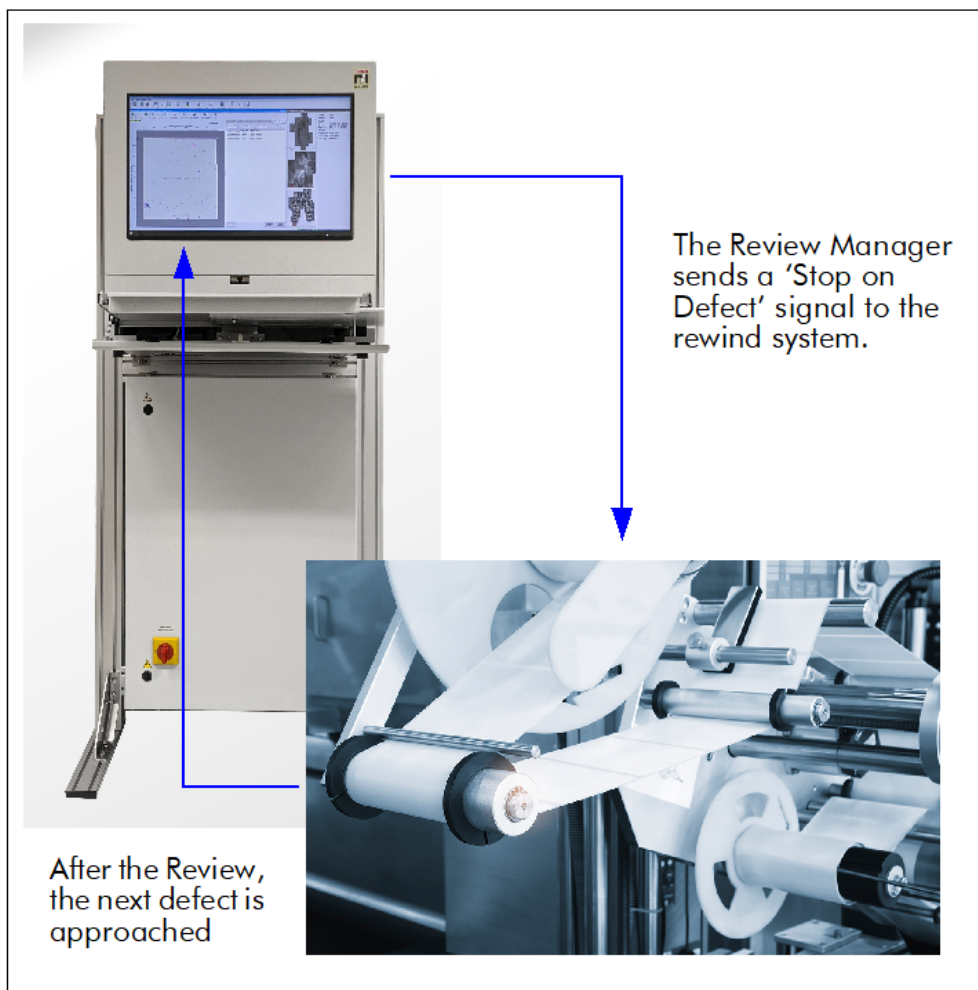


Dr. Schenk Review Manager – Automatic Stop on Defect for Inspected Rolls

DESCRIPTION

The Dr. Schenk Review Manager – Stop on Defect is an advanced system for reviewing inspected rolls on a rewinder system. It is the best choice to improve output quality, analyze weaknesses in the production process and thereby increase customer satisfaction while simultaneously reducing cost for waste material.

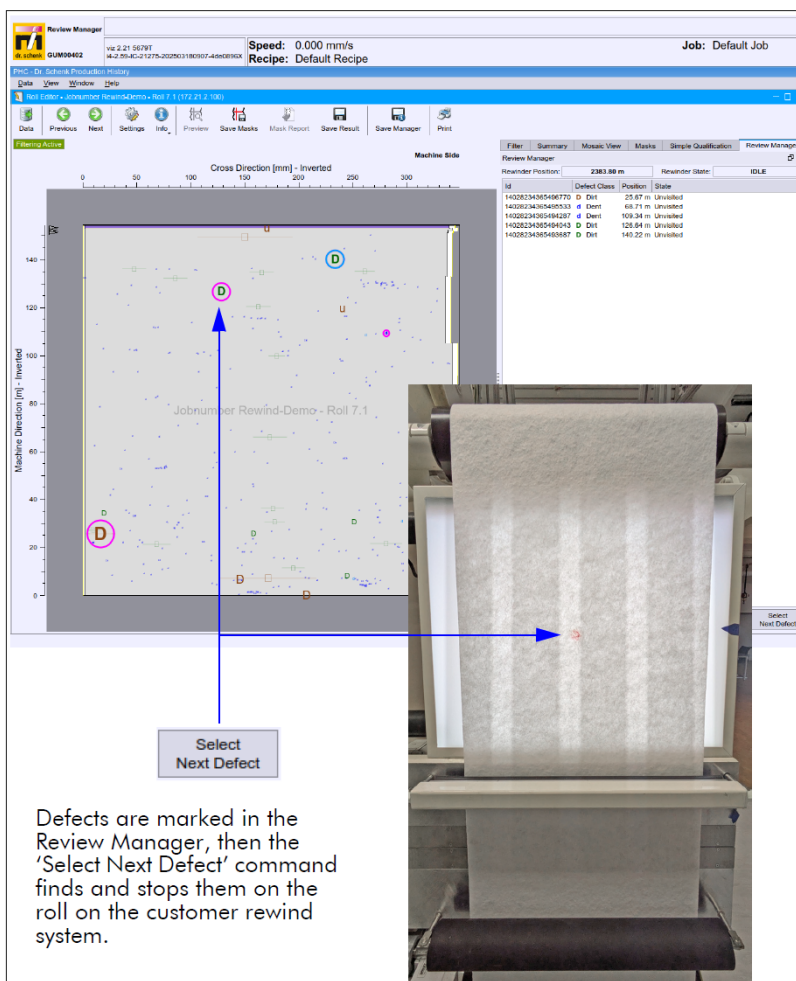
The Review Manager can be connected to a multitude of rewinder systems on the customer side, making it flexible to use in many production environments. It ties in seamlessly with Dr. Schenk EasyInspect for the optimal user experience.



FUNCTIONALITY

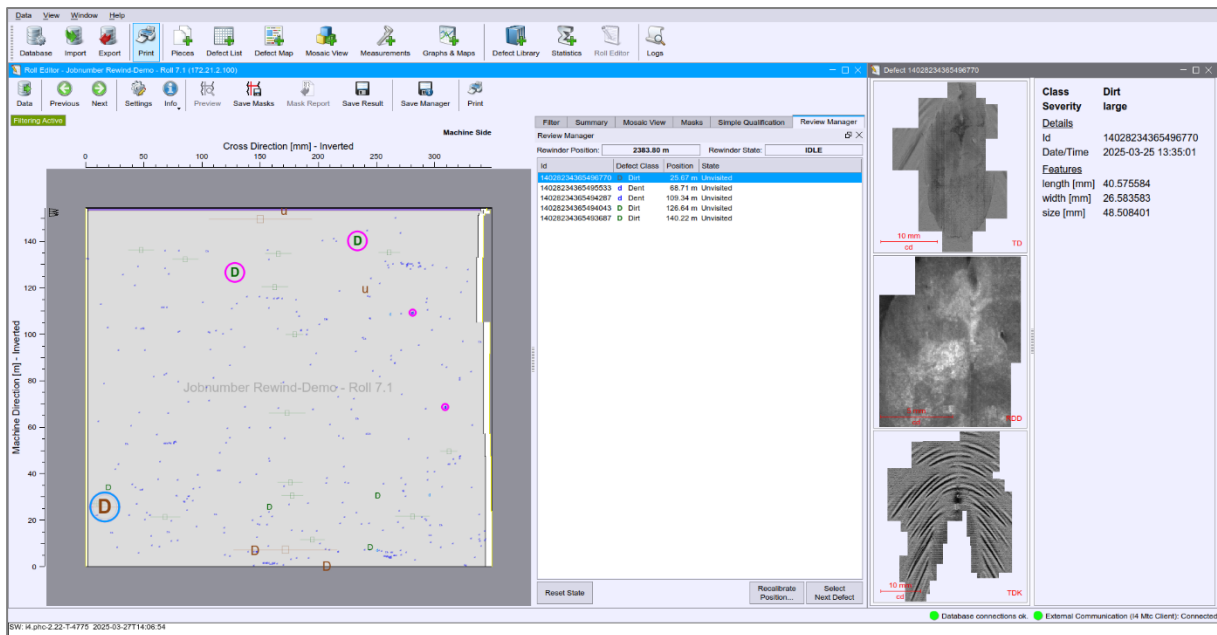
The Review Manager – Stop on Defect makes it easy for operators to review defects quickly and efficiently.

1. Data is imported from the inspection system via the database or TWIN database.
2. The Review Manager is set to “Ready”.
3. The user sets a reference point to align the coordinate systems of the Review Manager and the customer rewinder.
4. The user selects a number of defects which should be addressed on the rewinder.
5. The user starts the rewinder.
6. The Review Manager sends a “Slow” signal when the first defect comes close.
7. The rewinder stops at the targeted defect.
8. The user reviews the defect, and, if necessary, performs an action e.g. a material splice or defect removal.
9. The rewinder is started up again, and the Review Manager heads towards the next defect on the list.



PERFECT INTEGRATION IN EXISTING EASYINSPECT SYSTEM

The Review Manager – Stop on Defect is fully integrated into a standard EasyInspect system, via the PHC (Production History Client) and the integrated Roll Editor. Therefore, it is easy to operate, using the well-known user interface of the EasyInspect inspection AOI.



Opening a Roll in Review Manager and Marking Defects for Review

YOUR ADVANTAGES

- Fast and efficient review of finished rolls and their defects
- Cost savings and quality improvement for your production
- Easy to use software for selecting and reviewing defects
- One Review Manager can be connected to multiple databases
- Intelligent software automatically targets the next defect, allowing a single operator to monitor multiple Review Managers
- Simple connection via Digital I/O signals, customizable Handshake signals
- Shrink and stretch factors for rolls
- Optional: Customized solutions for integrating Review Manager with marking and labeling systems

SYSTEM INFORMATION

Hardware	<ul style="list-style-type: none">• Review Manager Master Processing Unit (MPU) including operating system software SKLinux• Encoder• SIO for Digital I/O Signals• AIB (All-in-One Box)• OTB (Operator Terminal Box)
Software	<ul style="list-style-type: none">• Review Manager Master Software• PHC (Production History Client)• Review Manager Roll Editor
Interfaces	<ul style="list-style-type: none">• TCP/IP for communicating to inspection system or TWIN Database for roll import• Digital I/O (24 V potential-free) for rewinder signals:<ul style="list-style-type: none">○ Slow○ Stop○ Ready
Customer Responsibility	<ul style="list-style-type: none">• Rewinder• Power supply cable• Cables from Review Manager to rewinder• Safety features for the rewinder



IMPORTANT:

Dr. Schenk provides only the Review Manager hardware and software. The connected rewinder device is provided by the customer and therefore the customer has full responsibility for the safety and correct usage of the rewinder device, including all moving parts.